

## Supplementary Material

**Supplementary Table1** Univariate analysis for cofilin expression before imatinib therapy.

variable	OR	p-value
Gender	0.458	0.123
Age	1.023	0.204
WBC ( $\times 10^9/L$ )	0.994	0.006*
Hb (g/L)	0.979	0.015*
PLT ( $\times 10^9/L$ )	0.997	0.065
Peripheral blood eosinophils (%)	0.913	0.12
Peripheral blood basophils (%)	0.991	0.079
Bone marrow blasts (%)	0.953	0.042*
Bone marrow eosinophils (%)	5.821	0.213
Bone marrow basophils (%)	4.943	0.291
<i>BCR-ABL</i>	0.992	0.271

\* indicates statistical significance, OR: ods ratio

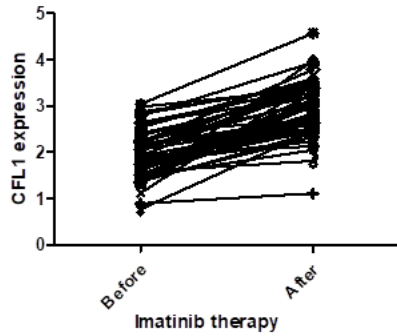
**Supplementary Table2** Multivariate analysis for cofilin expression before imatinib therapy.

variable	$\beta$	OR	p value
WBC	-0.014	0.986	0.033*
PLT	-0.006	0.994	0.028*

\* indicates statistical significance, OR: ods ratio

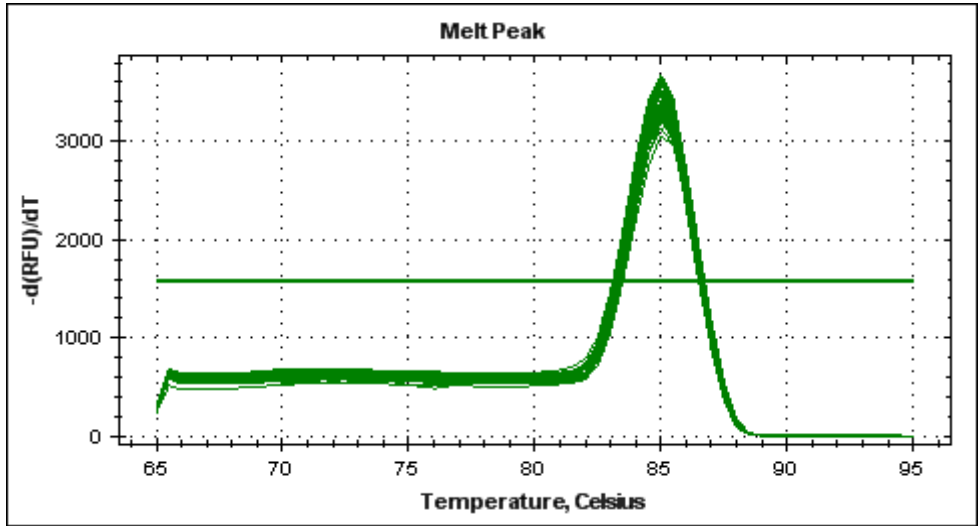
### Supplementary Figure

- |       |       |       |
|-------|-------|-------|
| ◆ CCL | ◆ YHS | ▲ ZWJ |
| ■ CHB | ◆ YYJ | ▲ ZXX |
| ▲ CJX | ▲ ZJT | ▼ ZZB |
| ▼ CP  | ◆ ZZJ | ▼ DQ  |
| ◆ CYW | ■ ZLJ | ◆ JXH |
| ◆ FHH | ▲ ZXX | ◆ LWX |
| ■ FJ  | ◆ QZA | ◆ SQ  |
| ▲ FRY | ◆ SCJ | ◆ SXF |
| ▼ GWJ | ◆ SHX | ◆ TXL |
| ◆ JKN | ▼ SGF | ◆ WHC |
| ■ JHB | ▲ SFX | ◆ WXX |
| ▲ JZW | ◆ TCF | ◆ WWM |
| ▲ LHL | ◆ WHJ | ◆ YDX |
| ▲ LSW | ◆ XMX | ◆ YMJ |
| ◆ LQP | ◆ XJC | ■ ZJX |
| ■ MGS | ◆ XWJ | ■ ZLF |
| ◆ PLF | ■ YJ  |       |
| ◆ PZY | ■ YYX |       |

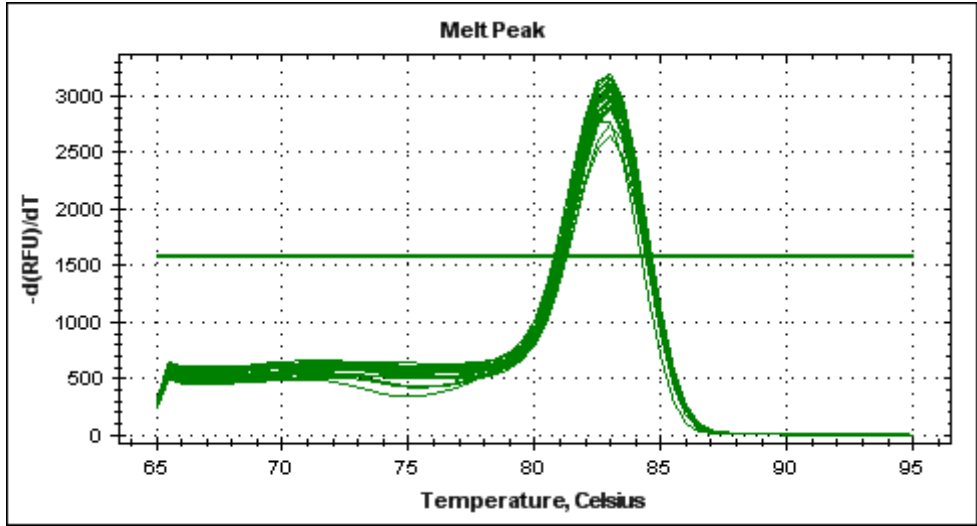


### Supplementary Figure1

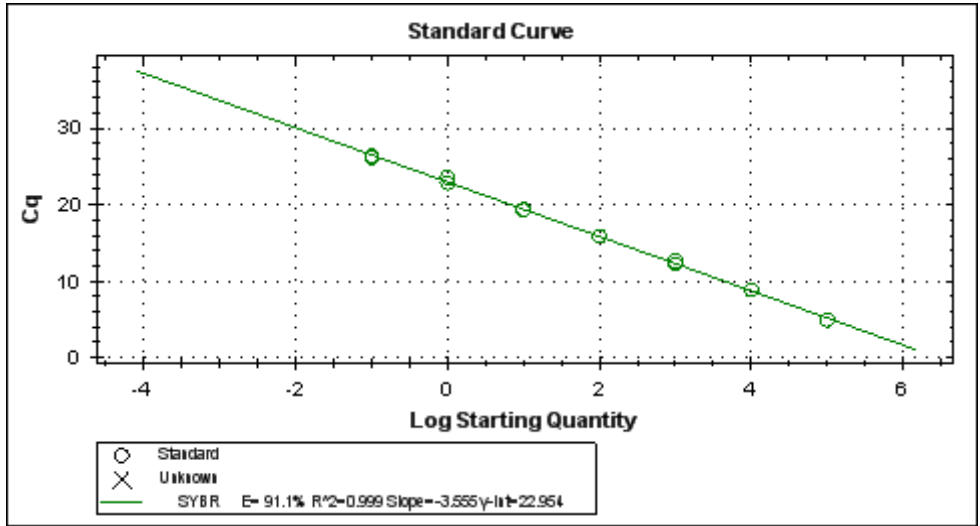
The CFL1 expression level of each patient was tested twice using Quantitative RT-PCR before and after 3 months imatinib therapy.



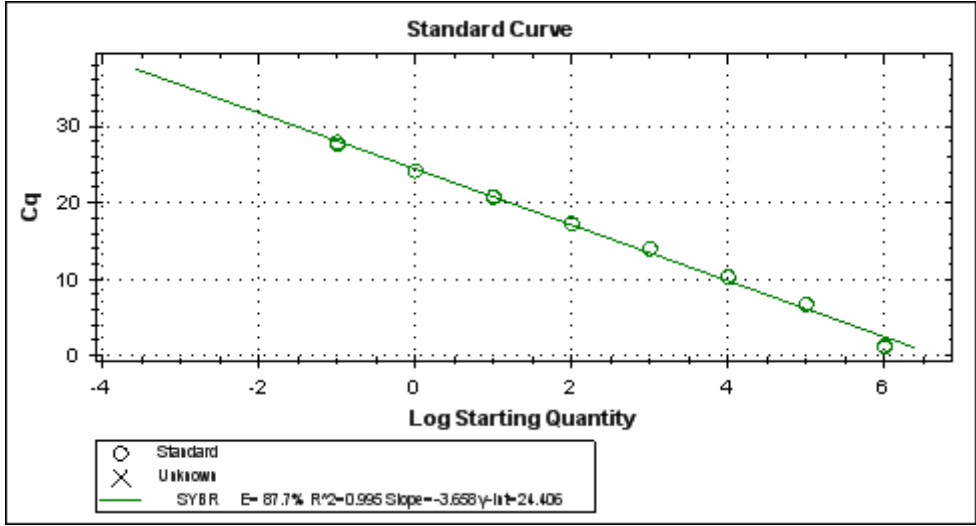
**Supplementary Figure2 The real-time PCR dissociation curve of CFL1**



**Supplementary Figure3 The real-time PCR dissociation curve of GAPDH**



**Supplementary Figure4 The real-time PCR amplification efficiency for CFL1**



**Supplementary Figure5 The real-time PCR amplification efficiency for GAPDH**