

Figure S1. The expression of HIF1 α expression in SUNE1/HRE cells under normoxia and hypoxia. CoCl₂ was used to mimic hypoxic condition *in vitro* and SUNE-1/HRE cells were treated with or without 200 μ M CoCl₂, and then exposed to IR of 5 Gy in presence or absence of 20 μ M cisplatin. Cells were harvest at 24 hours post-treatment and the protein level was detected and quantified by Western blot. β -actin was used as the loading control. Representative image from three independent experiments is shown.

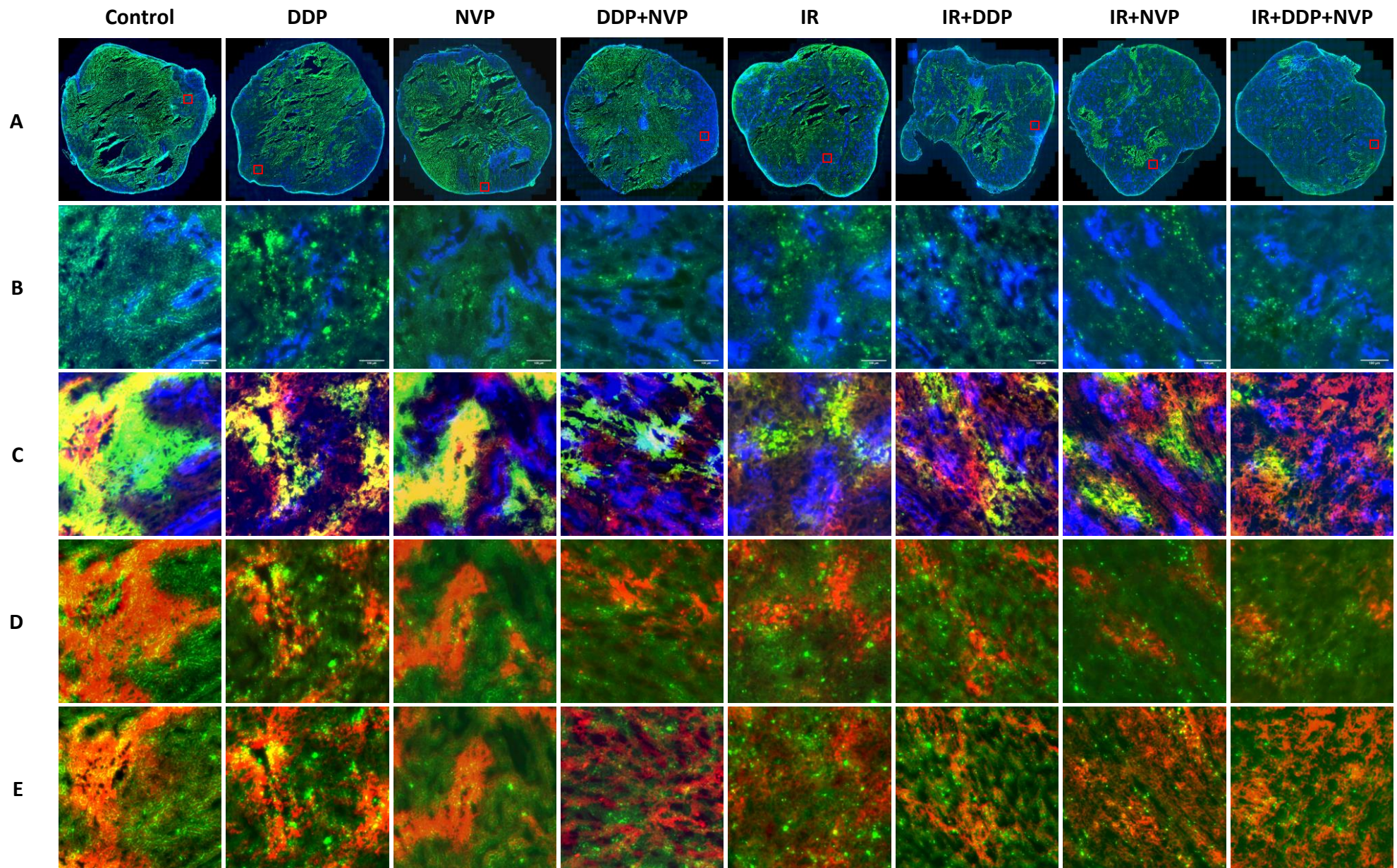


Figure S2. Detailed comparison of various biomarkers in SUNE1/HRE xenografts. Representative images were obtained from the magnified parts in Figure 6. GFP-expressing cells are preferentially observed at a distance to blood vessels. (A) Regions of interest marked by red boxes in GFP + Hoe in Figure 6; (B) GFP (green) and Hoechst (blue); (C) Pimonidazole (green), CA9 (red), Hoechst (blue) and the overlay (yellow); (D) Pimonidazole (red), GFP (green) and the overlay (yellow); (E) GFP (green), CA9 (red) and the overlay (yellow); Bar = 100 μ m.