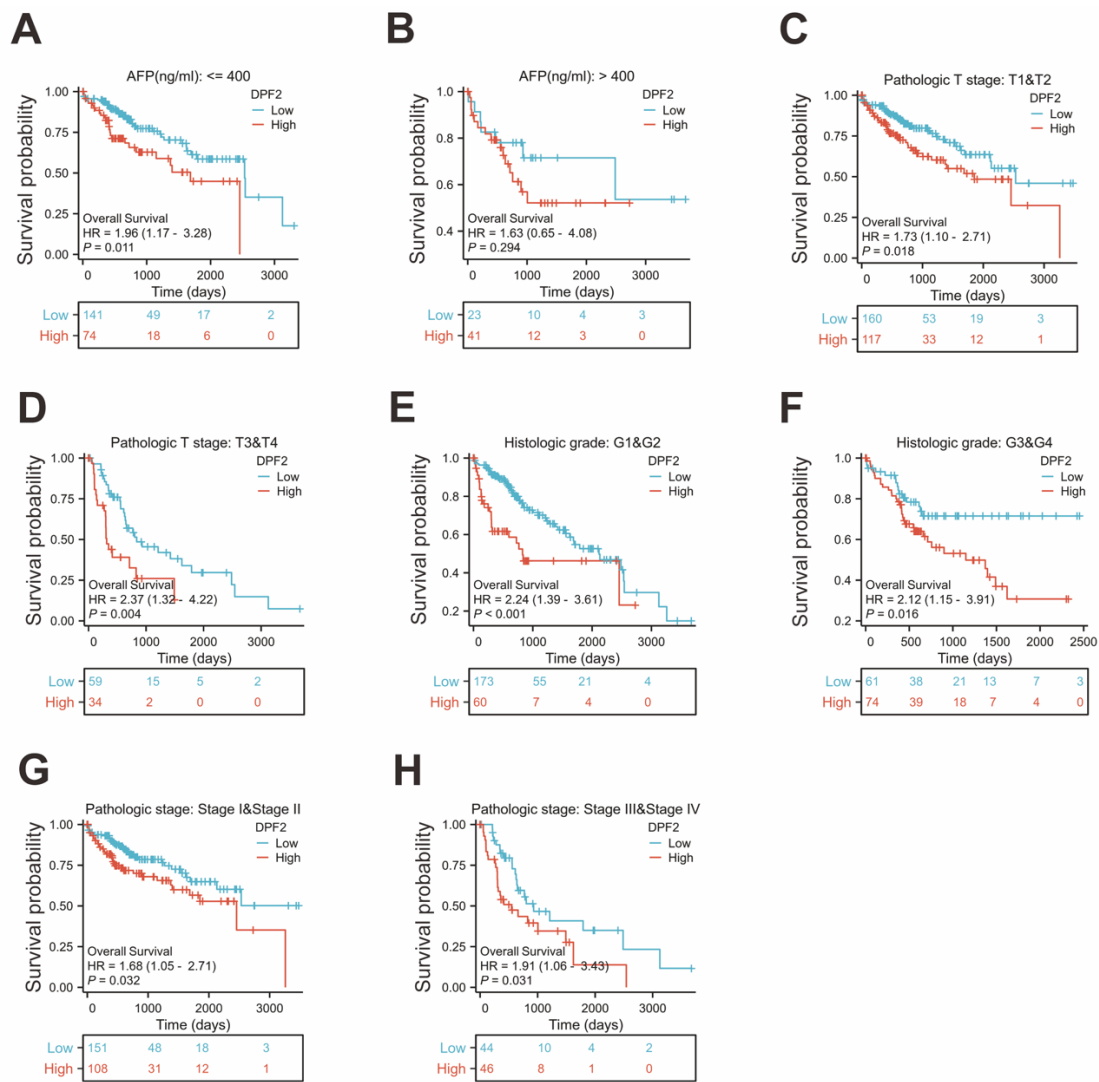
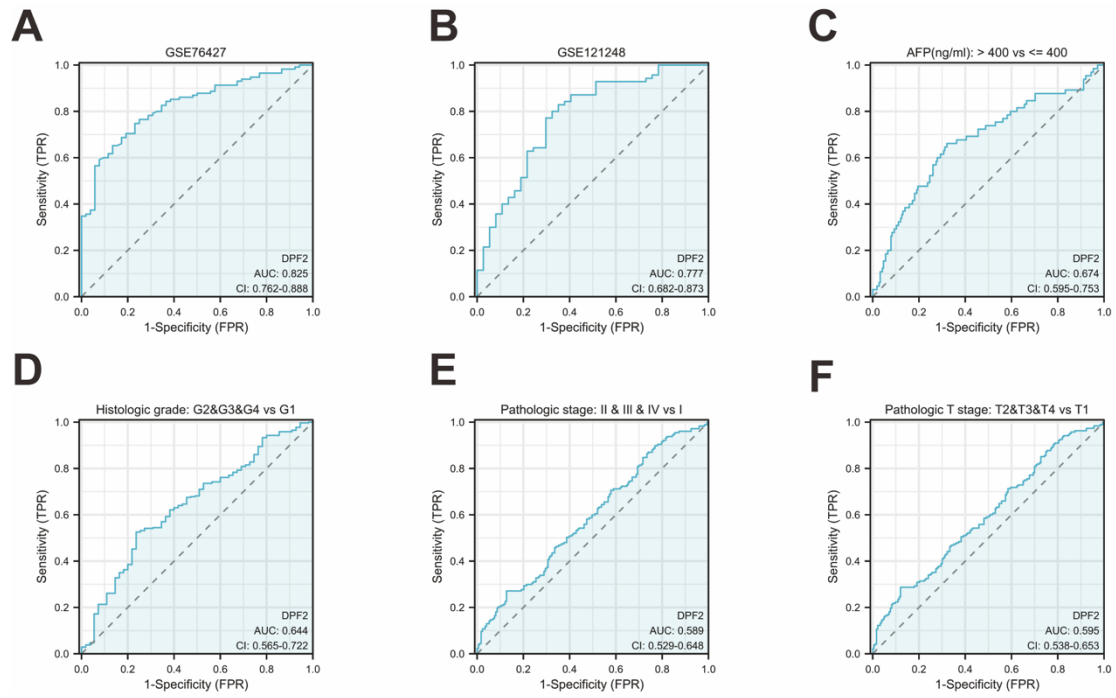


**Figure S1**



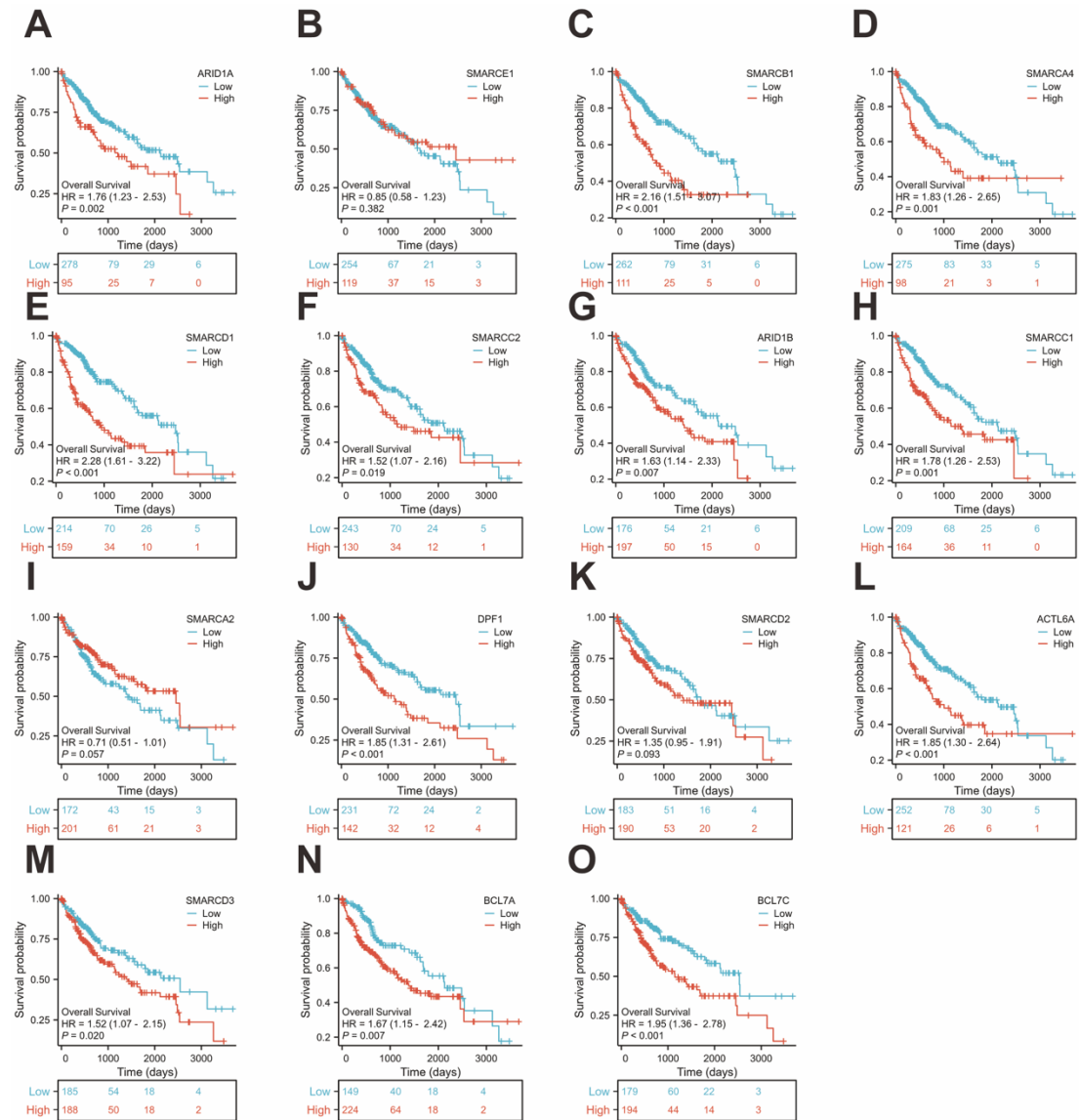
**Figure S1. High expression of DPF2 was associated with poor prognosis.** Kaplan–Meier survival curves of DPF2 in (A) AFP $\leq$ 400, (B) AFP $>$ 400, (C) T1 and T2, (D) T3 and T4, (E) G1 and G2, (F) G3 and G4, (G) stage I and II and (H) stage III and IV subgroups. OS, Overall Survival. DSS, Disease Free Survival. PFI: Progression Free Interval. RFS, Recurrence Free Survival.

**Figure S2**



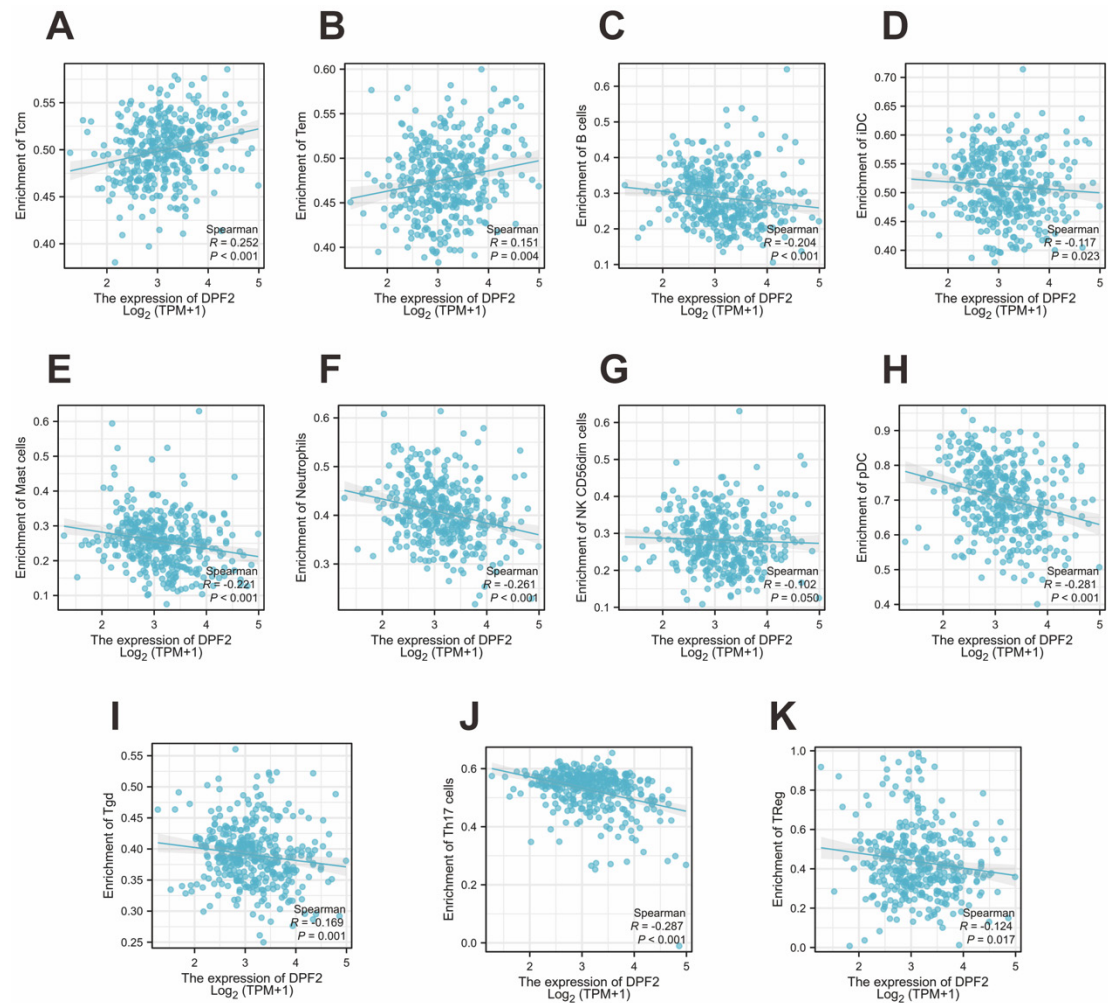
**Figure S2. ROC validation of DPF2 in different databases and clinicopathological features.** Diagnostic ROC curves in (A) GSE76427, (B) GSE121248, (C) AFP, (D) Histologic grade, (E) Pathologic stage, (F) T stage.

**Figure S3**



**Figure S3. Prognosis of DPF2-related genes in hepatocellular carcinoma from the TCGA database.** (A) ARID1A, (B) SMARCE1, (C) SMARCB1, (D) SMARCA4, (E) SMARCD1, (F) SMARCC2, (G) ARID1B, (H) SMARCC1, (I) SMARCA2, (J) DPF1, (K) SMARCD2, (L) ACTL6A, (M) SMARCD3, (N) BCL7A, (O) BCL7C. ns:  $p \geq 0.05$ ; \* $p < 0.05$ ; \*\* $p < 0.01$ ; \*\*\* $p < 0.001$ .

**Figure S4**



**Figure S4. Supplementary Figure Correlation of DPF2 Expression with immune infiltration Cells.** (A) Tcm, (B) Tem, (C) B cells, (D) iDC, (E) Mast cells, (F) Neutrophils, (G) NK CD56dim cells, (H) pDC, (I) Tgd, (J) Th17 cells, (K) Treg. ns:  $p \geq 0.05$ ; \* $p < 0.05$ ; \*\* $p < 0.01$ ; \*\*\* $p < 0.001$ .

**Table S1. Relationship between DPF2 expression and clinicopathological features in the GSE14520\_3921 database.**

| Characteristics          | Low expression of DPF2 | High expression of DPF2 | P value      |
|--------------------------|------------------------|-------------------------|--------------|
| n                        | 110                    | 111                     |              |
| Age, n (%)               |                        |                         | 0.280        |
| ≤60                      | 87 (39.4%)             | 94 (42.5%)              |              |
| >60                      | 23 (10.4%)             | 17 (7.7%)               |              |
| Missing                  | 0                      | 0                       |              |
| Gender, n (%)            |                        |                         | 0.675        |
| M                        | 94 (42.5%)             | 97 (43.9%)              |              |
| F                        | 16 (7.2%)              | 14 (6.3%)               |              |
| Missing                  | 0                      | 0                       |              |
| ALT(>/≤50U/L), n (%)     |                        |                         | 0.240        |
| low                      | 69 (31.2%)             | 61 (27.6%)              |              |
| high                     | 41 (18.6%)             | 50 (22.6%)              |              |
| Missing                  | 0                      | 0                       |              |
| AFP (>/≤300ng/ml), n (%) |                        |                         | <b>0.020</b> |
| low                      | 67 (30.7%)             | 51 (23.4%)              |              |

| Characteristics                   | Low expression of DPF2 | High expression of DPF2 | P value |
|-----------------------------------|------------------------|-------------------------|---------|
| high                              | 41 (18.8%)             | 59 (27.1%)              |         |
| Missing                           | 2                      | 1                       |         |
| Main Tumor Size (>/<=5 cm), n (%) |                        |                         | 0.702   |
| small                             | 68 (30.9%)             | 72 (32.7%)              |         |
| large                             | 41 (18.6%)             | 39 (17.7%)              |         |
| Missing                           | 1                      | 0                       |         |
| Multinodular, n (%)               |                        |                         | 0.640   |
| N                                 | 89 (40.3%)             | 87 (39.4%)              |         |
| Y                                 | 21 (9.5%)              | 24 (10.9%)              |         |
| Missing                           | 0                      | 0                       |         |
| Cirrhosis, n (%)                  |                        |                         | 0.637   |
| N                                 | 8 (3.6%)               | 10 (4.5%)               |         |
| Y                                 | 102 (46.2%)            | 101 (45.7%)             |         |
| Missing                           | 0                      | 0                       |         |
| TNM staging, n (%)                |                        |                         | 0.467   |
| I                                 | 51 (23.3%)             | 42 (19.2%)              |         |

| Characteristics        | Low expression of DPF2 | High expression of DPF2 | P value |
|------------------------|------------------------|-------------------------|---------|
| II                     | 35 (16%)               | 42 (19.2%)              |         |
| III                    | 24 (11%)               | 25 (11.4%)              |         |
| Missing                | 0                      | 2                       |         |
| BCLC staging, n (%)    |                        |                         | 0.973   |
| 0                      | 11 (5%)                | 9 (4.1%)                |         |
| A                      | 74 (33.8%)             | 74 (33.8%)              |         |
| B                      | 11 (5%)                | 11 (5%)                 |         |
| C                      | 14 (6.4%)              | 15 (6.8%)               |         |
| Missing                | 0                      | 2                       |         |
| Survival status, n (%) |                        |                         | 0.234   |
| Alive                  | 72 (32.6%)             | 64 (29%)                |         |
| Dead                   | 38 (17.2%)             | 47 (21.3%)              |         |
| Missing                | 0                      | 0                       |         |
| Recurr status, n (%)   |                        |                         | 0.253   |
| No                     | 54 (24.4%)             | 46 (20.8%)              |         |
| Yes                    | 56 (25.3%)             | 65 (29.4%)              |         |

| Characteristics | Low expression of DPF2 | High expression of DPF2 | P value |
|-----------------|------------------------|-------------------------|---------|
| Missing         | 0                      | 0                       |         |

Abbreviations: AFP, alpha-fetoprotein. Bold values are used to highlight statistical significance, and  $P < 0.05$ . Missing cases: Some of GSE14520\_3921 clinical data are missing.

**Table S2. Relationship between DPF2 expression and clinicopathological features in the GSE14520\_571 database.**

| Characteristics                  | Low expression of DPF2 | High expression of DPF2 | P value |
|----------------------------------|------------------------|-------------------------|---------|
| n                                | 10                     | 11                      |         |
| Age, n (%)                       |                        |                         | 0.635   |
| >60                              | 2 (9.5%)               | 4 (19%)                 |         |
| ≤60                              | 8 (38.1%)              | 7 (33.3%)               |         |
| Missing                          | 0                      | 0                       |         |
| ALT(>/≤50U/L), n (%)             |                        |                         | 1.000   |
| low                              | 6 (28.6%)              | 6 (28.6%)               |         |
| high                             | 4 (19%)                | 5 (23.8%)               |         |
| Missing                          | 0                      | 0                       |         |
| Main Tumor Size (>/≤5 cm), n (%) |                        |                         | 1.000   |
| small                            | 6 (28.6%)              | 7 (33.3%)               |         |
| large                            | 4 (19%)                | 4 (19%)                 |         |



| Characteristics           | Low expression of DPF2 | High expression of DPF2 | P value |
|---------------------------|------------------------|-------------------------|---------|
| Missing                   | 0                      | 0                       |         |
| Multinodular, n (%)       |                        |                         | 1.000   |
| N                         | 7 (33.3%)              | 7 (33.3%)               |         |
| Y                         | 3 (14.3%)              | 4 (19%)                 |         |
| Missing                   | 0                      | 0                       |         |
| TNM staging, n (%)        |                        |                         | 0.600   |
| I                         | 1 (16.7%)              | 2 (33.3%)               |         |
| II                        | 1 (16.7%)              | 0 (0%)                  |         |
| III                       | 0 (0%)                 | 2 (33.3%)               |         |
| Missing                   | 8                      | 7                       |         |
| BCLC staging, n (%)       |                        |                         | 0.467   |
| A                         | 2 (33.3%)              | 2 (33.3%)               |         |
| B                         | 0 (0%)                 | 2 (33.3%)               |         |
| Missing                   | 8                      | 7                       |         |
| AFP (>/<=300ng/ml), n (%) |                        |                         | 0.656   |
| high                      | 4 (20%)                | 6 (30%)                 |         |

| Characteristics        | Low expression of DPF2 | High expression of DPF2 | P value |
|------------------------|------------------------|-------------------------|---------|
| low                    | 6 (30%)                | 4 (20%)                 |         |
| Missing                | 0                      | 1                       |         |
| Survival status, n (%) |                        |                         | 0.395   |
| Alive                  | 6 (28.6%)              | 4 (19%)                 |         |
| Dead                   | 4 (19%)                | 7 (33.3%)               |         |
| Missing                | 0                      | 0                       |         |
| Recurr status, n (%)   |                        |                         | 0.361   |
| No                     | 4 (19%)                | 2 (9.5%)                |         |
| Yes                    | 6 (28.6%)              | 9 (42.9%)               |         |
| Missing                | 0                      | 0                       |         |

Abbreviations: AFP, alpha-fetoprotein. Bold values are used to highlight statistical significance, and  $P < 0.05$ . Missing cases: Some of **GSE14520\_571** clinical data are missing.