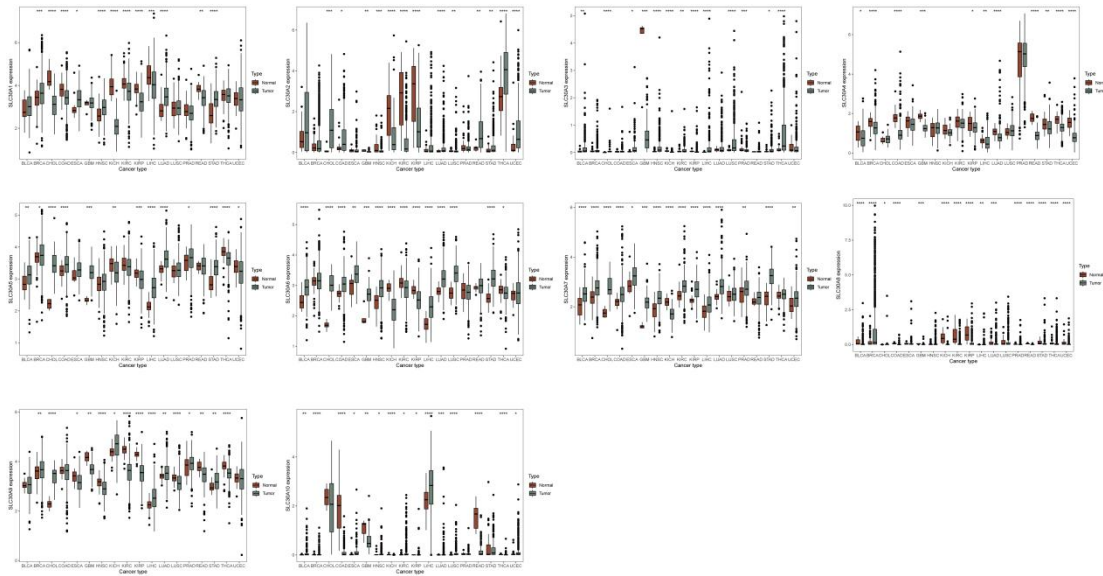
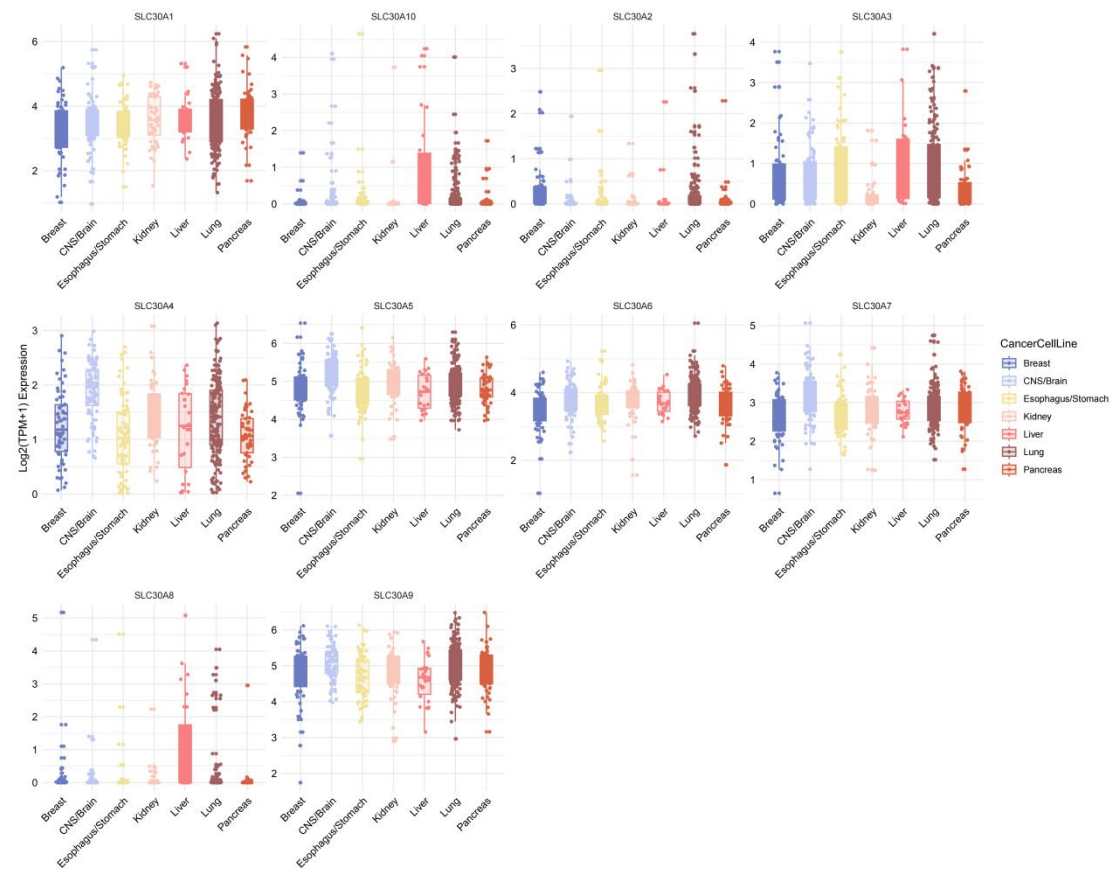


Fig. S1 Box plots represent the expression levels of SLC30A family genes in tumors and normal tissues.



The bands in the box plot box are the median expression values of the genes. Statistical significance levels “*”, “**”, “***” and “****”) were indicated for P values < 0.05, < 0.01, < 0.001, and < 0.0001, respectively.

Fig.S2 Boxplot illustrating the expression levels of SLC30A family genes across seven types of cancer cell lines (breast, CNS/brain tumor, esophageal/gastric, renal, hepatocellular, lung, and pancreatic).



This data is sourced from the Cancer Cell Line Encyclopedia (CCLE) database.

Fig.S3 DNA Methylation of SLC30A family genes in pan-cancer.

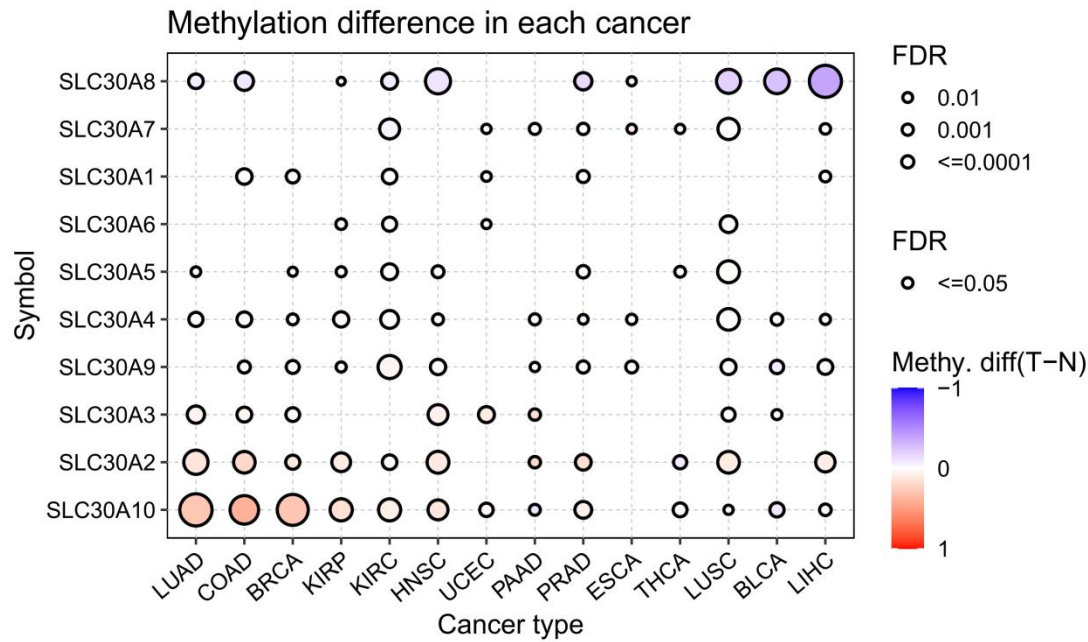


Fig.S4 Correlations between DNA methylation and mRNA expression of SLC30A family genes

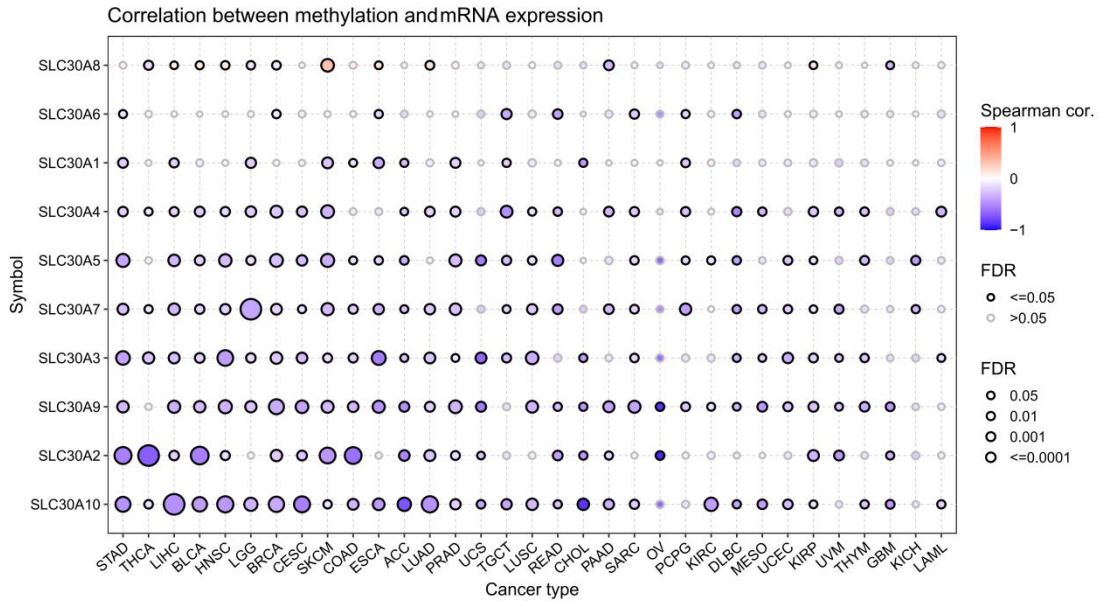
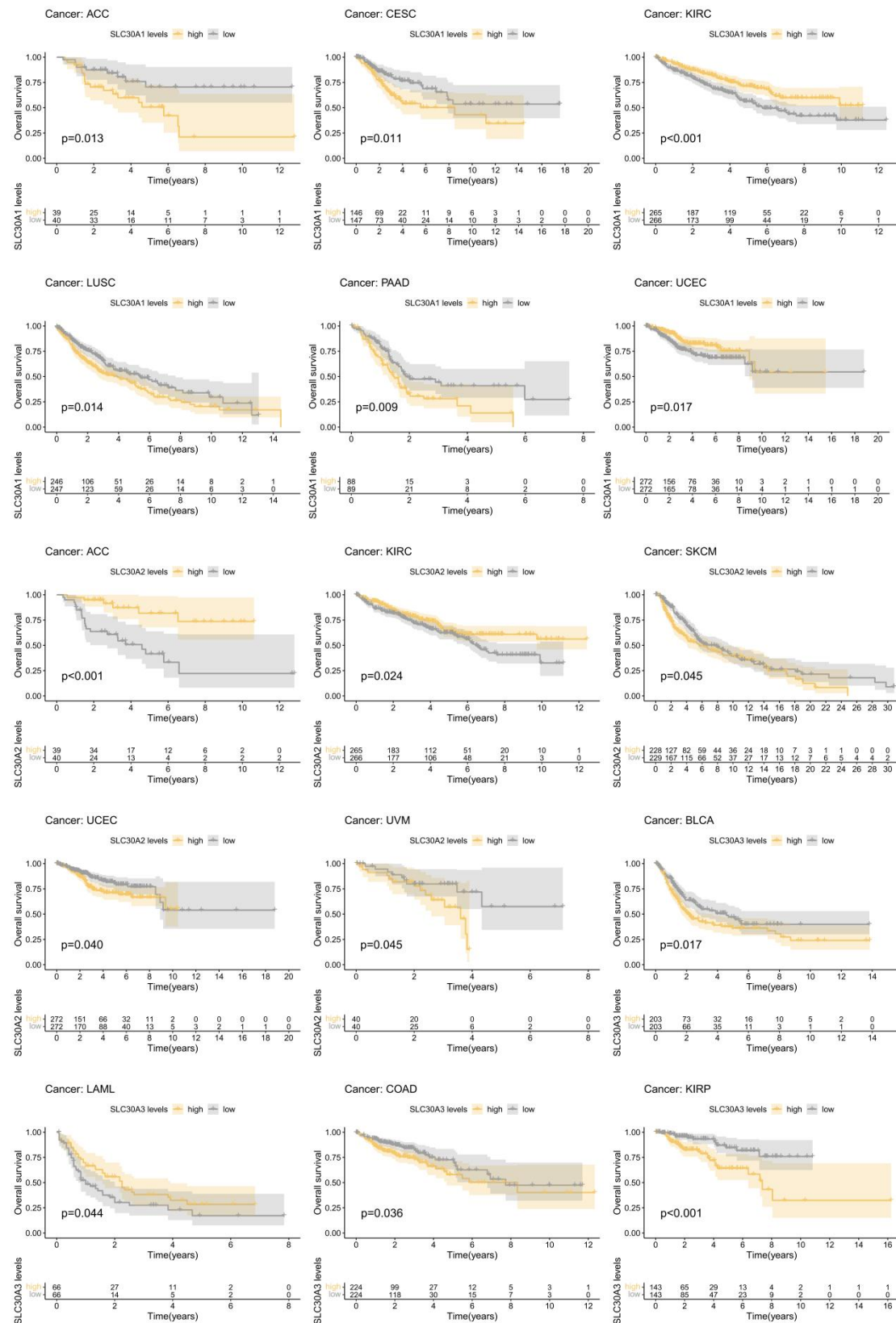
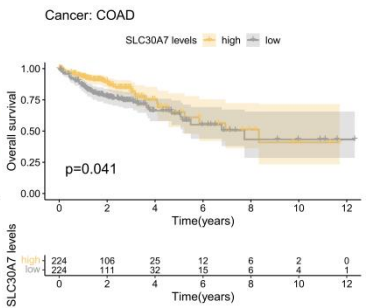
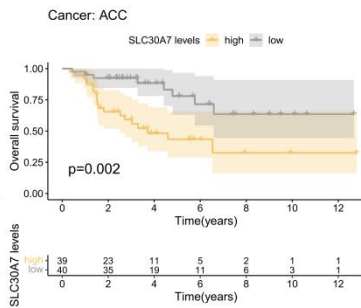
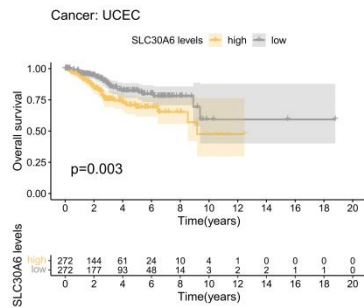
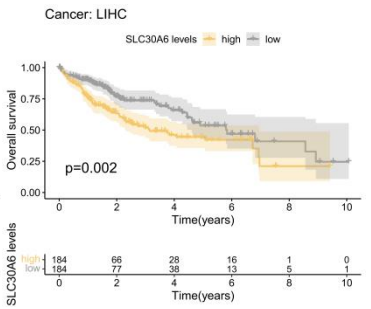
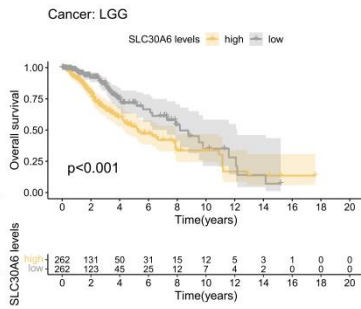
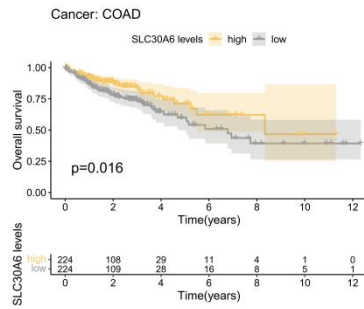
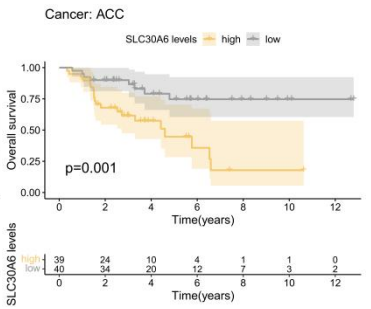
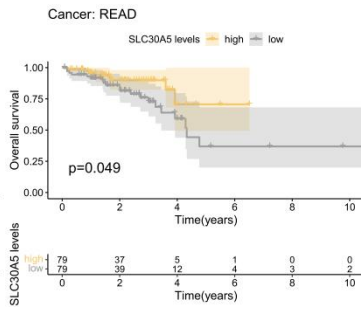
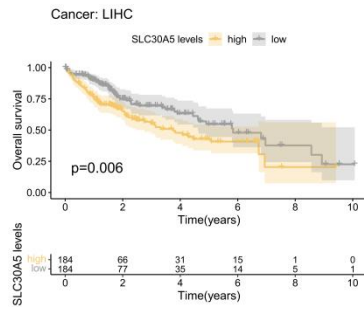
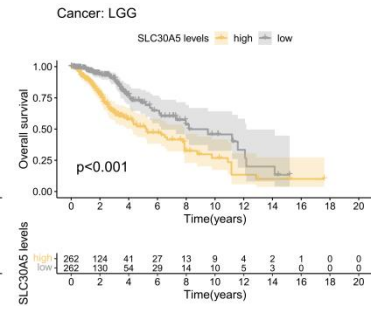
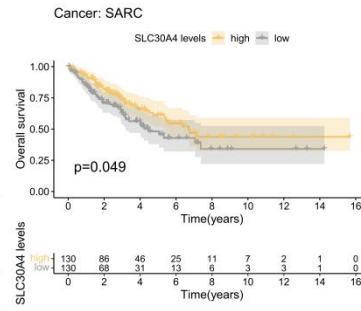
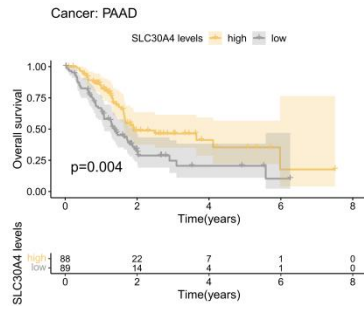
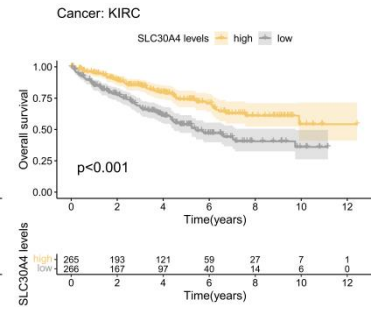
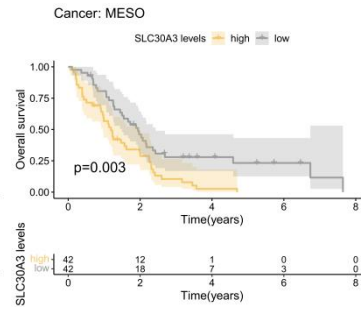
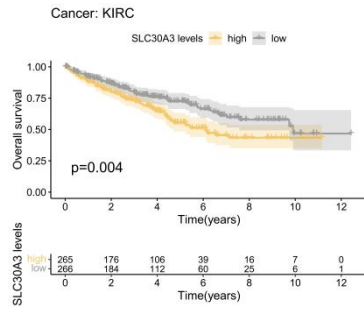
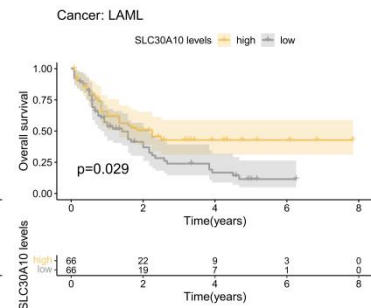
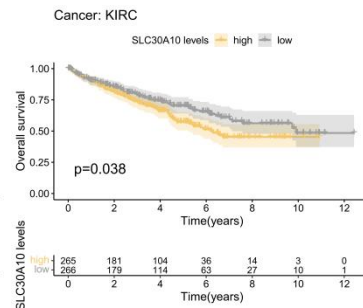
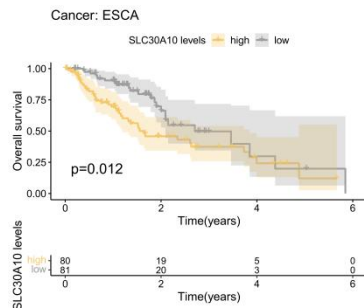
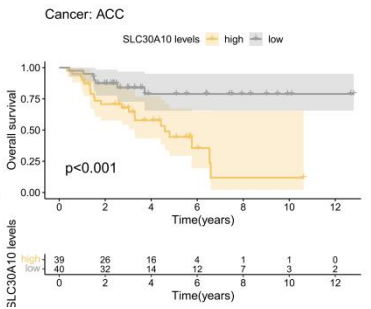
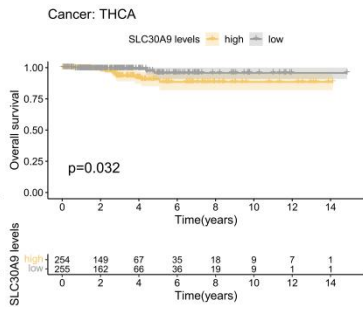
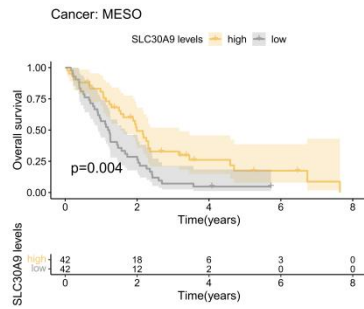
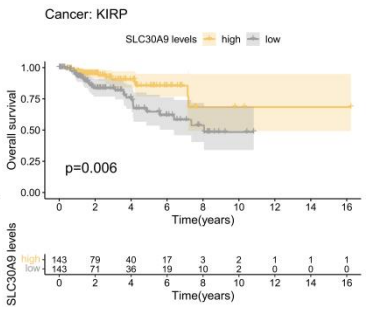
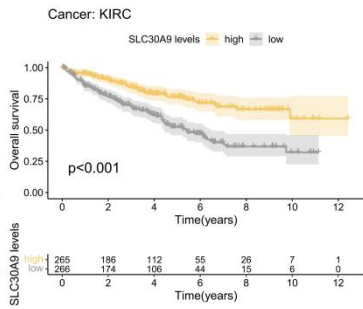
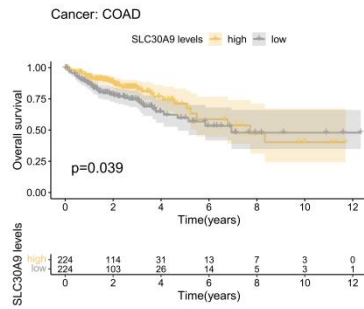
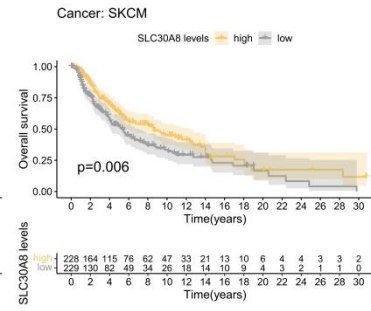
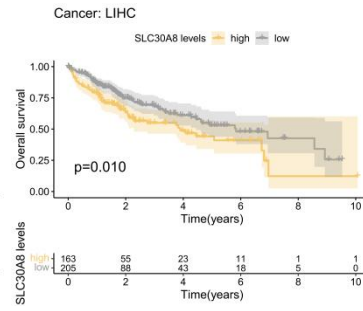
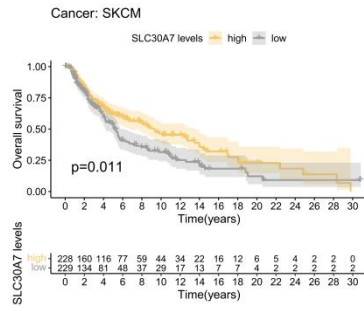
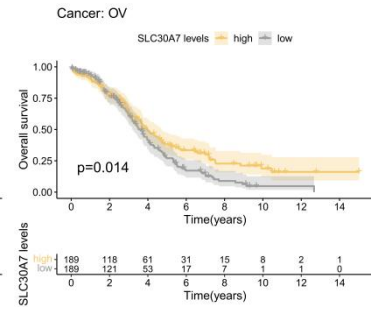
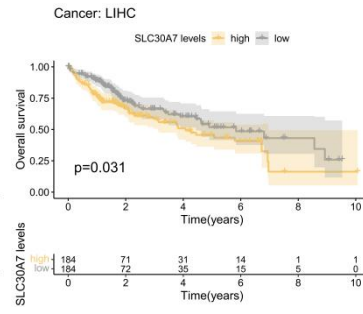
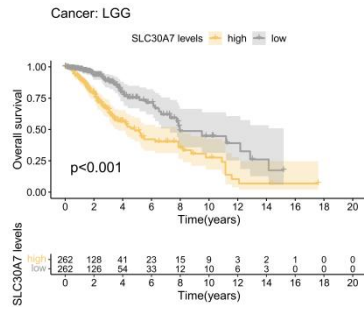


Fig.S5 Kaplan–Meier survival curve comparison of high/low expression of SLC30A family genes in pan-cancer.







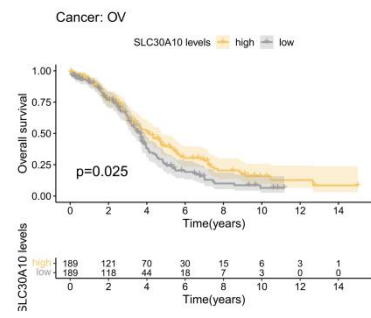
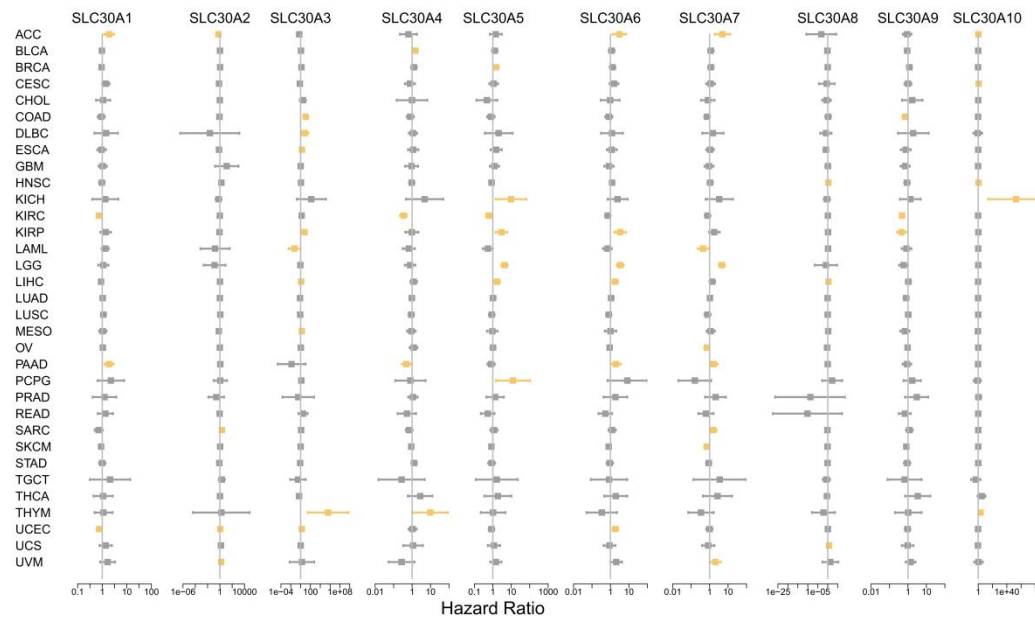


Fig.S6 Cox proportional hazard analysis indicates the overall survival rate associated with SLC30A family genes expression in various cancer types.



A hazard ratio <1 indicates low risk, and a hazard ratio >1 indicates high risk.

Fig.S7 Differential expression genes in high- and low-SLC30A5 expression groups.

