

Supplementary information

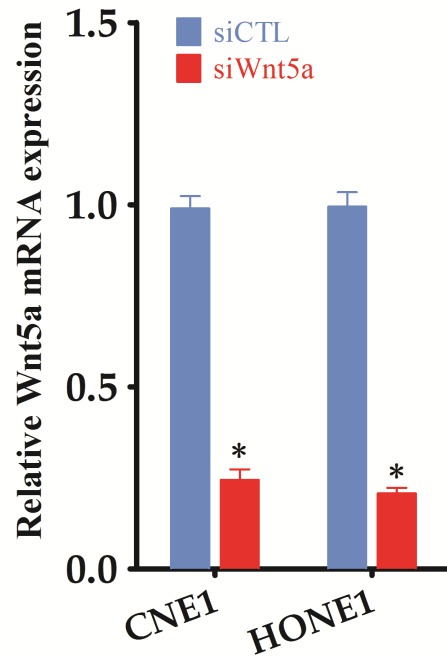


Figure S1. Wnt5a mRNA levels in CNE1 and HONE1 cells transfected with siRNA against Wnt5a. Values are means \pm SEM, n=4 *, p<0.05 compared to siCTL.

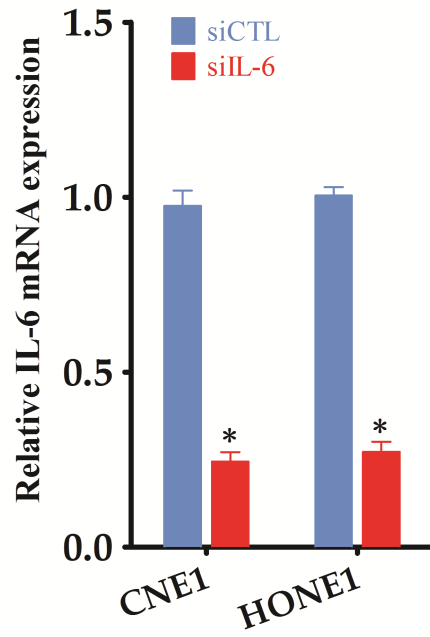


Figure S2. IL-6 mRNA levels in CNE1 and HONE1 cells transfected with siRNA against IL-6. Values are means \pm SEM, n=4 *, p<0.05 compared to siCTL.

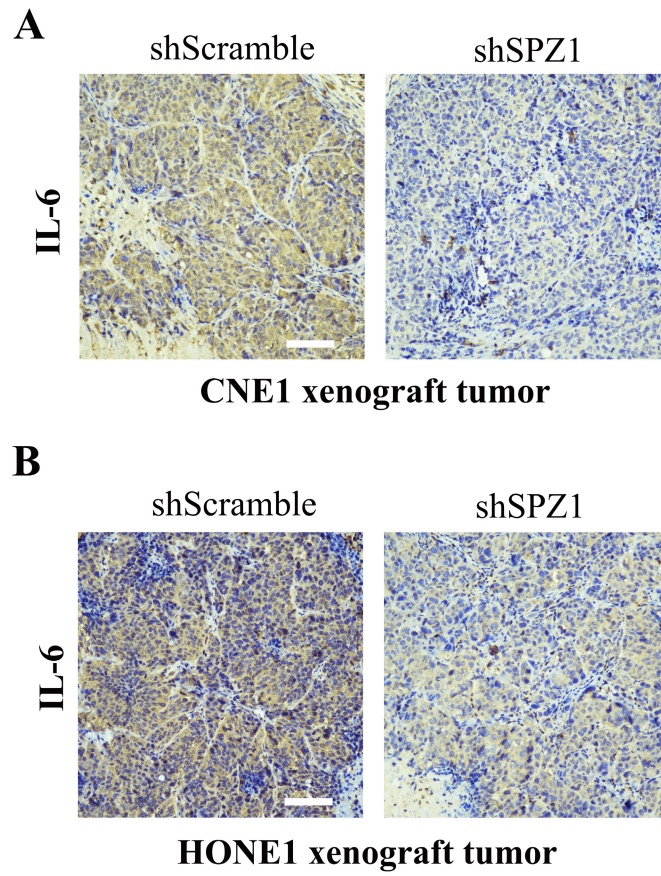


Figure S3. (A and B) Images of IHC showing IL-6 expression in the xenografts of CNE1 or HONE1 cells transfected with shScramble or shSPZ1. Scare bar = 100 μ m.

Table S1 Primer sequences used for Real-time PCR

Gene Name	Primer	Sequence
<i>SPZ1</i>	Forward	GGAACAGGTG AAGAAACTGAGCC
	Reverse	GCTTCTCTTGCAGAGTTCCCTG
<i>E-cadherin</i>	Forward	GCCTCCTGAAAAGAGAGTGGAAG
	Reverse	TGGCAGTGTCTCTCCAAATCCG
<i>N-cadherin</i>	Forward	CCTCCAGAGTTTACTGCCATGAC
	Reverse	GTAGGATCTCCGCCACTGATTC
<i>Vimentin</i>	Forward	AGGCAAAGCAGGAGTCCACTGA
	Reverse	ATCTGGCGTTCCAGGGACTCAT
<i>Wnt5a</i>	Forward	TACGAGAGTGCTCGCATCCTCA
	Reverse	TGTCTTCAGGCTACATGAGCCG
<i>IL-6</i>	Forward	AGACAGCCACTCACCTCTTCAG
	Reverse	TTCTGCCAGTGCCTCTTTGCTG
<i>Actin</i>	Forward	CACCATTGGCAATGAGCGGTTC
	Reverse	AGGTCTTTGCGGATGTCCACGT

Table S2 Target sequences used for silencing

Gene Name	Target sequence
<i>SPZ1</i>	siRNA#1: 5'-CCATTGCCTTATTCGAAAT-3'
	siRNA#2 :5'-CCATCAAGTTACAGAACAA-3'
<i>Wnt5a</i>	siRNA:5' - GCCAGUAUCAAUUCCGACA-3'
<i>IL-6</i>	siRNA: 5'-CUUCCAAUCUGGAUUCAAU-3'

Table S3 Clinicpathological characteristics of NPC patients

Characteristic	All Patients (n=119)	
	n	%
Age(years)		
≤50	39	32.8
>50	80	67.2
Sex		
Male	96	80.7
Female	23	19.3
T stage		
T1-T2	48	40.3
T3-T4	71	59.7
N stage		
N0-1	76	63.9
N2-3	43	36.1
M stage		
M0	57	47.9
M1	62	52.1
TNM stage		
I-II	73	61.3
III-IV	46	38.7
Smoking		
Yes	87	73.1
No	32	26.9

