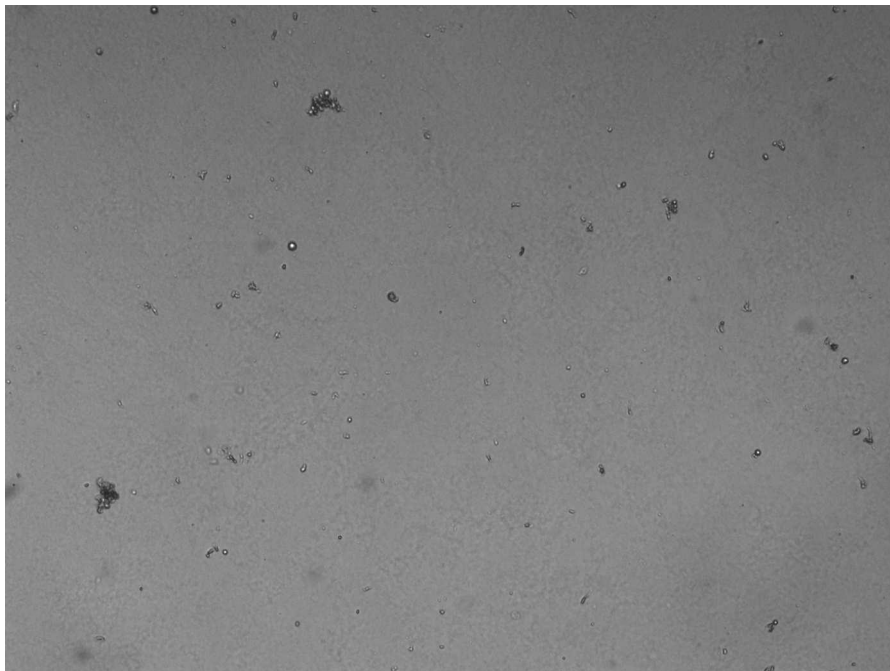


Supplementary figure 1. Representative picture of spheroid forming assay of breast normal cell line MCF-10A. As shown in the figure, MCF-10A cells formed aggregates that resemble acinus-like structures (Jayanta Debnath et, al. (2003)) suggesting that MCF-10A could not form spheroids similar to cancer cell lines.



Supplementary figure 2. Representative picture of spheroid forming assay of ALDH1A1 negative cells.