

## Supplementary information

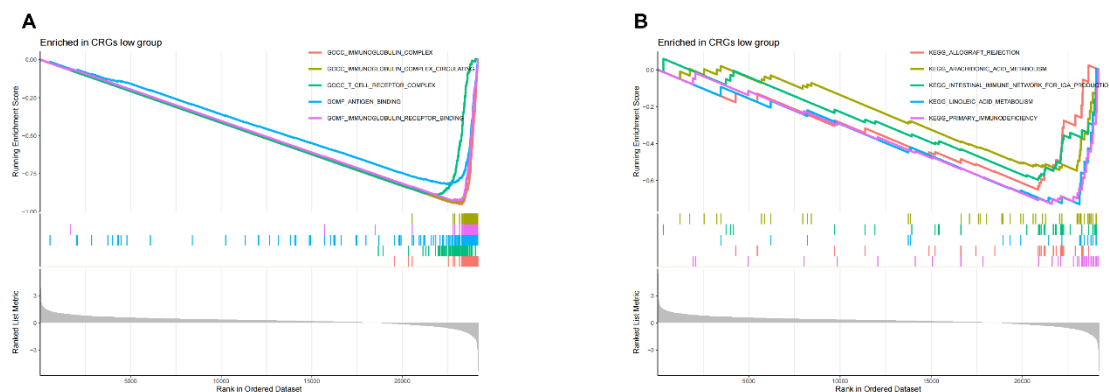


Figure S1. A and B, Genomic enrichment analysis (GSEA) of high/low expression groups of centrosome-related genes

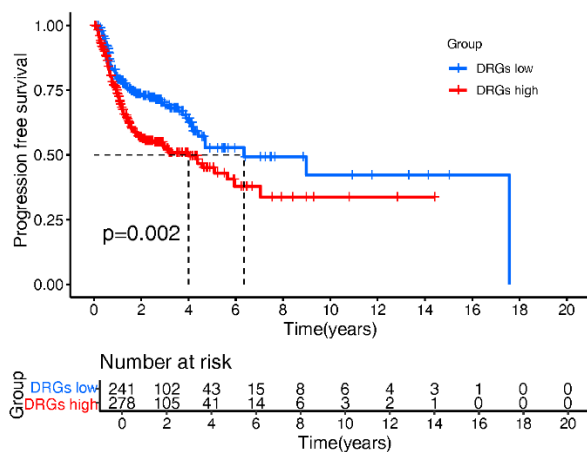


Figure S2. Kaplan-Meier analysis of progression free survival curves for TCGA patients in the DRGs high/low groups.

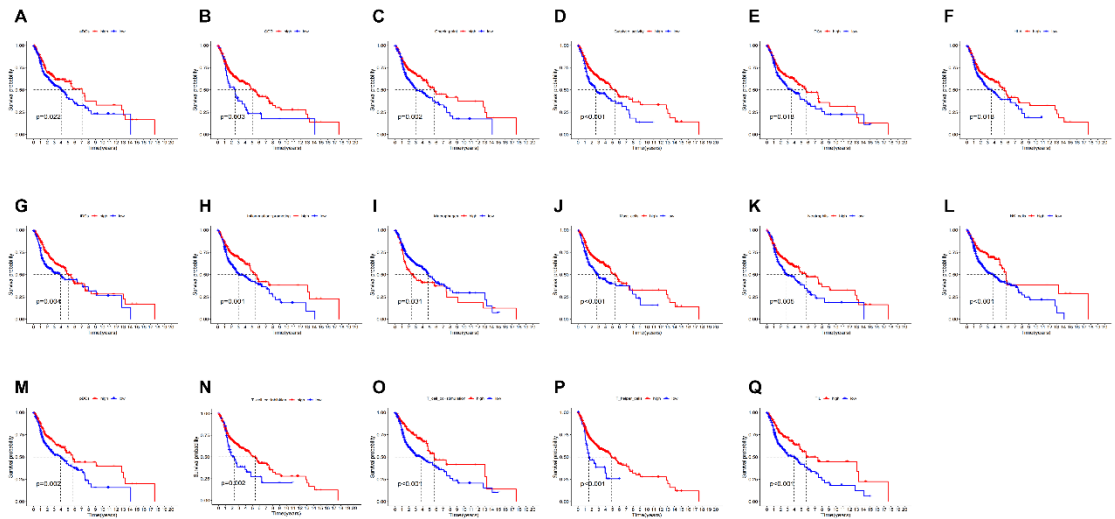


Figure S3. A to T, Kaplan-Meier analysis of OS curves in patients with high and low immunocompetence differences.

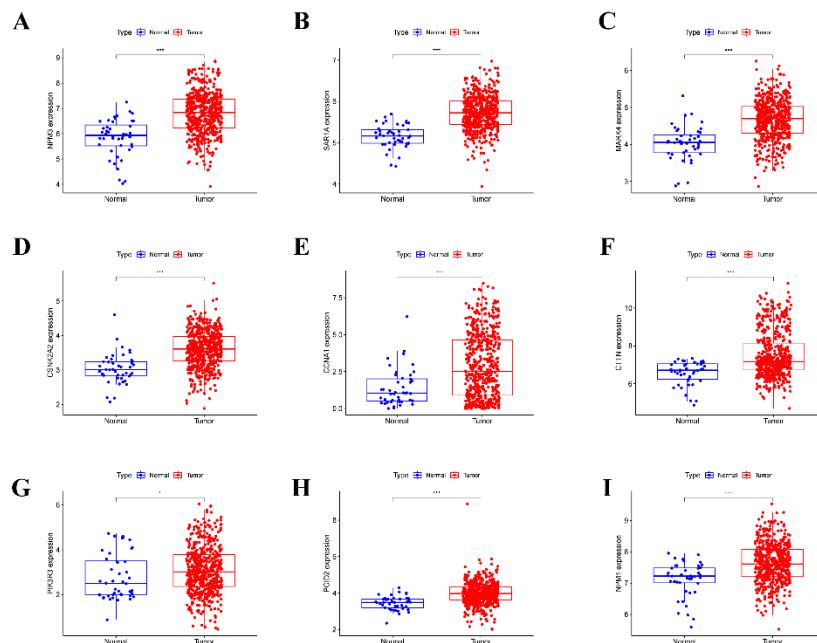


Figure S4. mRNA expression of SAR1A, NPM1, NMP3, CTTN, CSNK2A2, PIK3R3, PCID2, MARK4 and CCNA1 between normal and tumor in TCGA.

Table S1 Primer sequences used for Q-PCR and Real-time PCR

Gene Name	Primer	Sequence
<i>CCNA1</i>	Forward Reverse	GCACACTCAAGTCAGACCTGCA ATCACATCTGTGCCAAGACTGGA
<i>PIK3R3</i>	Forward Reverse	CCACCTAAGCCAATGACTTCAGC GTTGAGGCATCTCGGACCAAGA
<i>CSNK2A2</i>	Forward Reverse	CGACCATCAACAGAGACTGACTG GTGAGACCACTGGAAAGCACAG
<i>CTTN</i>	Forward Reverse	AGGTGTCCTCTGCCTACCAGAA CCTGCTCTTTCTCCTTAGCGAG
<i>NMP3</i>	Forward Reverse	TGACCATCAGGAGATCGCAGTC TTCAGGCGGAAGGTTACAGGTG
<i>NPM1</i>	Forward Reverse	GCCAGTGCATATTAGTGGACAGC GGAACCTTGCTACCACCTCCAG
<i>PCID2</i>	Forward Reverse	CTGCGGAATCTTCCTCATCCTG GGCAACCAGAAAAGCATCCAGAG
<i>SAR1A</i>	Forward Reverse	GGGCTTTATGGACAGACCACAG CCGTAACCTTGCCTCTTGAGCA
<i>MARK4</i>	Forward Reverse	GTCAACAGACTGTGAGAGCATCC GCTCTGTGTATGGCTTCAACTCC
<i>ACTB</i>	Forward Reverse	CACCATTGGCAATGAGCGGTTC AGGTCTTTGCGGATGTCCACGT