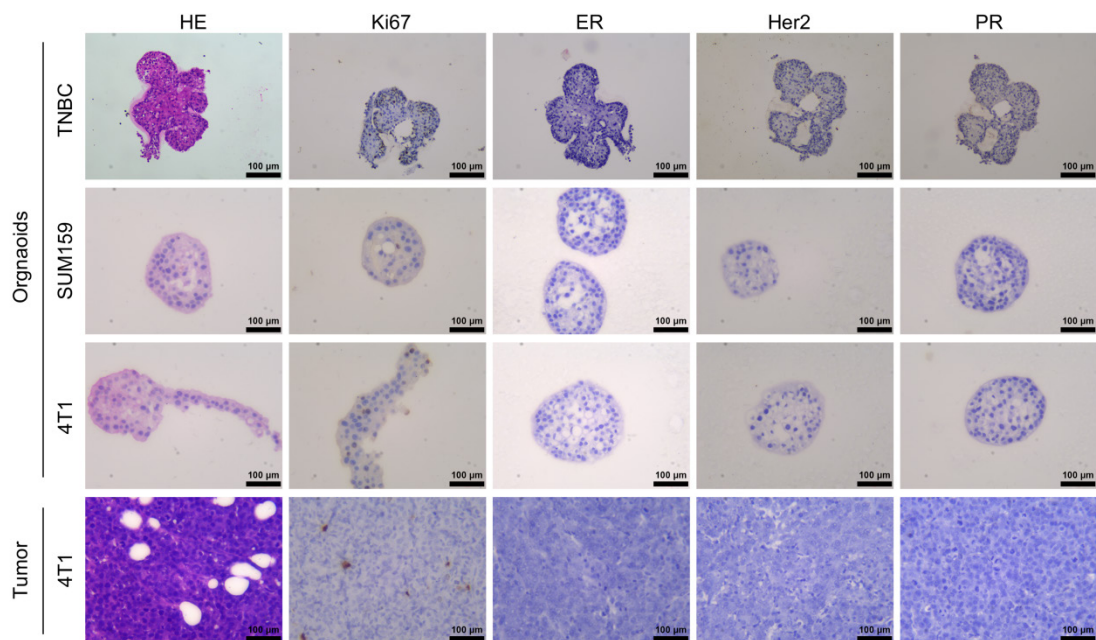


**Supplementary Fig. 1. Stigmasterol downregulates Bcl-2 in BCSCs isolated from SUM159 and 4T1 cells.** Western blotting analysis of Bcl2 in BCSCs after treatment with 0, 1, 5, and 10  $\mu\text{M}$  stigmasterol.



**Supplementary Fig. 2. Identification of breast cancer cells and organoids.** (A) Pathological structures were identified using H&E staining, and Ki67, ER, Her2, and PR expressions were assessed using IHC staining in breast cancer cells and organoids (magnification 200 $\times$ ).